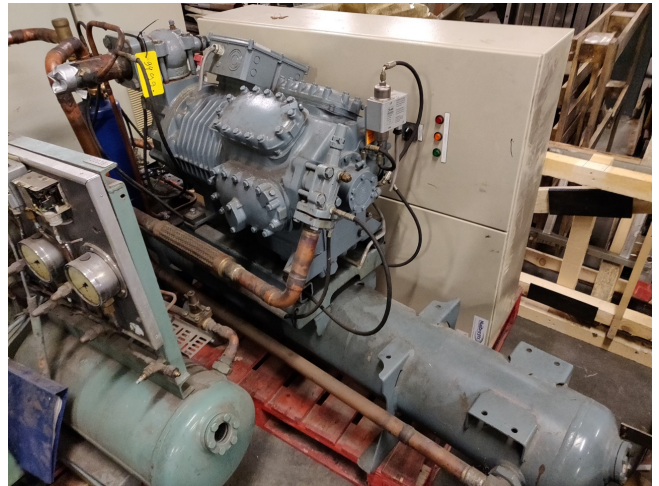


# DWM D8DH5-500X-AWM/D Tank aggregate

## Specifications

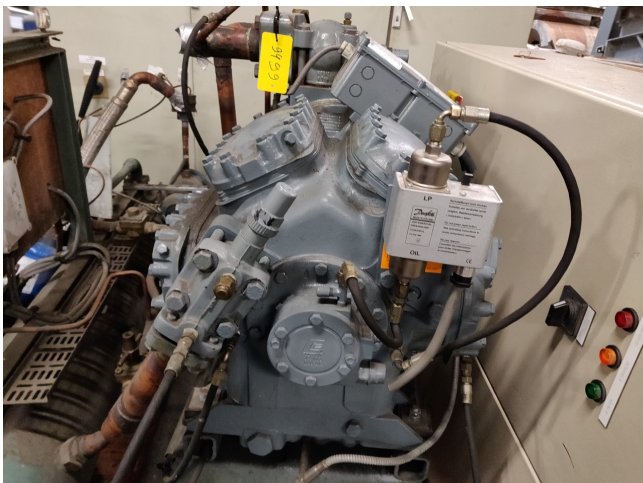
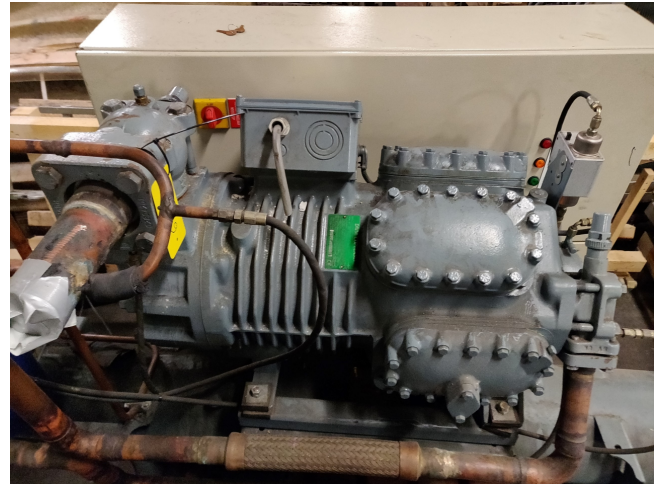
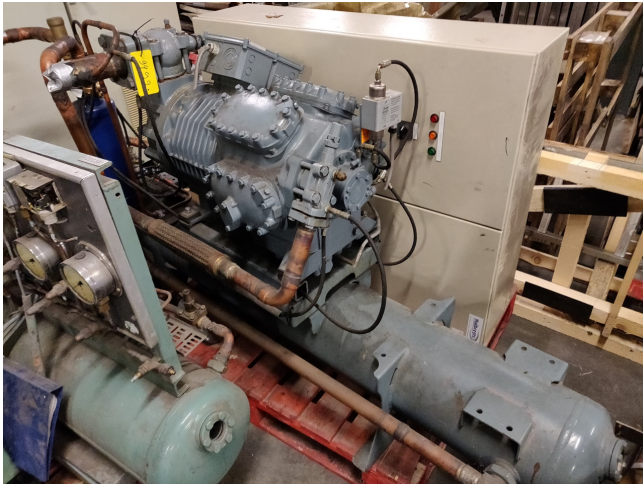
Brand	DWM
Type	D8DH5-500X-AWM/D Tank aggregate
Refrigerant	Freon
kW at 0°C/+40°C	124.25
kW at -5°C/+40°C	103.42
kW at -10°C/+40°C	85.29
kW at -20°C/+40°C	56.09
kW at -30°C/+40°C	34.54
Remarks	R404a - R22 or other freon types
Package / Rack	✓



## Description

### Used DWM D8DH5-500X-AWM/D Tank aggregate

Used semi-hermetic compressor DWM - Copeland D8DH5-500X-AWM/D. \*Why choose for HOSBV? We're not only the largest used refrigeration specialist in Europe, but also, we deliver all equipment including an extensive test, warranty and industrial cleaning. \*Optional we can also perform a new paint job and arrange the logistics.



**Cooling capacity [kW]**

t <sub>c</sub> \ t <sub>e</sub>	-40	-35	-30	-25	-20	-15	-10	-5	0	5
20	30.19	38.73	49.25	62.01	77.26	95.28	116.31	140.64	168.51	200.20
25	27.04	35.36	45.43	57.53	71.91	88.85	108.60	131.42	157.58	187.33
30	24.07	32.12	41.72	53.13	66.62	82.44	100.87	122.15	146.57	174.36
35	-	29.00	38.09	48.79	61.35	76.03	93.10	112.83	135.46	161.27
40	-	25.98	34.54	44.49	56.09	69.60	85.29	103.42	124.25	148.04
45	-	23.05	31.05	40.22	50.83	63.14	77.41	93.91	112.90	134.64
50	-	20.19	27.58	35.94	45.53	56.61	69.44	84.28	101.40	121.06
55	-	-	24.14	31.66	40.20	50.01	61.36	74.52	89.74	107.29

**Power input [kW]**

t <sub>c</sub> \ t <sub>e</sub>	-40	-35	-30	-25	-20	-15	-10	-5	0	5
20	14.41	16.37	18.24	19.96	21.45	22.64	23.46	23.83	23.67	22.92
25	14.76	16.93	19.06	21.08	22.91	24.49	25.73	26.57	26.93	26.74
30	15.05	17.41	19.78	22.08	24.24	26.18	27.84	29.13	29.98	30.33
35	-	17.84	20.43	22.98	25.45	27.73	29.78	31.50	32.83	33.69
40	-	18.23	21.01	23.81	26.55	29.16	31.57	33.70	35.49	36.84
45	-	18.59	21.54	24.56	27.56	30.47	33.23	35.75	37.97	39.80
50	-	18.93	22.04	25.25	28.49	31.69	34.77	37.67	40.29	42.58
55	-	-	22.52	25.90	29.36	32.82	36.21	39.45	42.47	45.20